
Digital Wireless Colour Camera Recordable CCTV Kit



Installation and Operating Instructions

These instructions should be retained in a safe place for future reference.

WELCOME,

Dear user, thanks for purchasing this product.

**Much investment in time and effort has gone into its development,
We now presenting you ZERO interference digital wireless security camera
and it is our hope that it will bring you many years of trouble-free peace-in-mind service.
Please read this user manual carefully before installing or using these units.**

Important Safety Precautions

Please read before installing and using this product

Damages caused by non-compliance with this operating manual will void the warranty! We will not assume any liability for damages to items or persons caused by improper handling or non-compliance with the safety notices! Any warranty claim will be null and void in such cases.

1. Do not drop, puncture or disassemble the camera or receiver; otherwise the warranty will be voided.
2. Avoid all contact with water, and dry hands before using.
3. Never tug on the power cords. Use the plug to unplug it from the wall outlet.
4. Do not expose the camera or receiver to high temperature or leave it in direct sunlight. Doing so may damage the camera or cause camera temporary malfunction.
5. Use the devices with care. Avoid pressing hard on the camera or receiver body.
6. For your own safety, avoid using the camera or power off the camera when there is a storm or lightning.
7. Remove the power adapter during long periods between usages.
8. Use only the accessories and power adapters supplied by the manufacturer.
9. To meet the regulations pertaining to parental responsibility, keep the devices out of the reach of infants.
10. Check power cables, do not get crushed or damaged by sharp edges whenever the devices are in operation.



FCC Compliance Statement:

This device complies with Part 15 of the FCC Rules.

Operation is subjected to the following two conditions:

- (1) this device may not cause harmful interference, and
- (2) this device must accept any interference received, including interference that may cause undesired operation.



Products with CE Marking comply with EMC Directive (2004/108/EC); Low Voltage Directive (73/23/EEC); R&TTE(1999/5/EC) issued by the Commission of the European Community. Compliance with these directives implies conformity to the following European Norms:
EMC: EN 301 489
LVD: EN 60065
Radio: EN 300 328

FCC/CE WARNING

This equipment has been tested and found to comply with limits for a Class B digital device, pursuant to Part 15 of the FCC rules and ETSI (EN) 300 328. These limits are designed to provide reasonable protection against harmful interference in residential installations. This equipment generates, uses, and can radiate radio frequency energy, and if not installed and used in accordance with the instructions, may cause harmful interference to radio communications.

However, there is no guarantee that interference will not occur in a particular installation. If this equipment does cause interference to radio or television equipment reception, which can be determined by turning the equipment off and on, the user is encouraged to try to correct the interference by one or more of the following measures:

- Reorient or relocate the receiving antenna.
- Move the equipment away from the receiver.
- Plug the equipment into an outlet on a circuit different from that to which the receiver is connected.
- Consult the dealer or an experienced radio/television technician for additional suggestions.

You are cautioned that any change or modifications to the equipment not expressly approved by the party responsible for compliance could void Your authority to operate such equipment.

Disposal

If the camera system no longer functions or can no longer be repaired, it must be disposed of according to the valid statutory regulations. Disposal of spent batteries / accumulators:

You are required by law (Battery Ordinance) to return all spent batteries and accumulators. Disposing of spent batteries/accumulators with common household waste is prohibited! Batteries/accumulators that contain hazardous substances are marked with the symbols on the side. These symbols indicate that it is prohibited to dispose of these batteries/ accumulators in the household waste.

The abbreviations for the respective heavy metals are: Cd= cadmium, Hg= mercury, Pb= lead. You can return spent batteries and accumulators that can no longer be charged to the designated collection points in your community, outlets or wherever batteries or accumulators are sold. Following these instructions will allow you to fulfill the legal requirements and contribute to the protection of our environment!



CONTENTS

1. INTRODUCTION—	3
2. KIT CONTENTS—	6
3. INSTALLATION—	8
3.1 Contents and Connections	8
3.2 Powering up the system	9
3.3 Setting the Camera Channel (Optional)	10
3.4 Pairing the Camera to Receiver (Optional)	10
3.5 Camera Installation	11
4. MONITOR PANEL INTRODUCTION—	12
5. SYSTEM INTRODUCTION—	13
5.1 Icon Functions	13
5.2 System Menu	14
6. System Operation —	16
6.1 Camera Setup	16
6.2 Recorder Setup	19
6.3 Event List	21
6.4 System Setup	23
6.5 Alarm Buzzer	26
6.6 Pan Tilt Zoom	27
6.7 Memory Card Overwrite	28
7.1 Sec24 Media Player Introduction	29
7.2 Installation	30
7.3 Playback Recorded File(s)	33
7.4 Channel Disable / Enable Select	35
8. System Configuration—	36
9. Product Specification—	37
10. Total Recording Time for Memory Cards (32GB max.)—	37

1. INTRODUCTION

The Digital Wireless Colour Camera Recordable CCTV Kit is a wireless security system designed to view and capture video clips of any motion viewed by the wireless camera and store them in on a memory card. The wireless camera supplied is colour, weatherproof and suitable for day/night use for the protection of your home or office, etc.

Please read before you start:

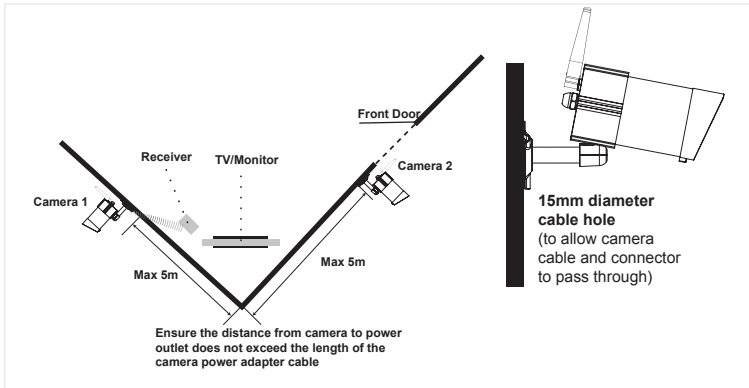
Always use discretion when installing CCTV surveillance equipment especially when there is perceived policy. Enquire regarding local regulations applicable to the lawful installation of video recording/surveillance. Third party consent may be required.

WIRELESS DEVICES OPERATING RANGE:

Ensure the signal reception viewed from the wireless camera is the best possible reception (i.e. no interference lines viewed on the TV) between the camera and receiver. If necessary reduce the distance between the camera and receiver to improve overall system performance.

The Wireless Colour Camera Recordable CCTV Kit operating on a secure digital 2.4GHz frequency can greatly reduce interference from products such as wireless routers, cordless phones, microwave ovens, concrete walls, large scale metal objects, and furniture.

PLANNING YOUR LAYOUT:



NOTE:

The camera has an open field RF operating range of up to 150m.

SAFETY AND INSTALLATION TIPS:

DVR

- keep away from heat sources and high temperature places
- Avoid direct sunlight
- Avoid humid places
- avoid vibration
- Install in a ventilated environment
- The supplied 2GB memory card can be replaced with up to a 32GB capacity one if required.

Camera(s) and DVR

Do not attempt to open the units with the power adaptor plug connected to avoid any risk of personal injury.

When installing CCTV camera(s), always follow manufacturer's advice when using power tools, steps, ladders, etc. and wear suitable protective equipment (e.g. safety goggles) when drilling holes. Before drilling holes through walls check for hidden electricity cables and water pipes. The use of cable/pipe detector is advisable.

It is also advisable to avoid exposing any cameras to extreme weather conditions (e.g. under a gutter which is prone to any water leaks). When installing any cameras with this unit, it is advisable to use cable conduit to protect any video/power extension cables from being exposed externally and to prevent/reduce the chances of the cables being tampered with. After drilling any hole through an external wall for a cable, ensure the hole is sealed up around the cable using a sealant to prevent drafts.

To prevent a fire or electrical shock hazard, do not attempt to open the housing while the unit is exposed to rain, water or wet conditions. There are no user serviceable parts inside. Refer servicing to qualified service personnel. Avoid pointing the camera(s) directly at the sun or any bushes, tree branches or moving objects that might unnecessary cause the DVR to record due to winds for example. The system also provides "Masking" function, and the user may screen out motion detection area in parts of the picture which motion detection is not required.



NIGHT VISION:

The camera has built-in infra-red LEDs to allow you to view at night for 24hrs surveillance. The LEDs will automatically activate at night and the picture viewed will turn to black and whit. The night viewing range is up to 5-8m.

2. KIT CONTENTS

- A** 1 x 7" LCD Monitor (Receiver)
- B** 1 x Digital Wireless Cameras
- C** 2 x 5V/1A Power Adapter for Camera and Receiver
- D** 1 x Camera Stands
- E** 1 x Fixings Pack
- F** 1 x Video Playback PC Software(CD-ROM)
- G** 1 x AV Cable for TV Output
- H** 1 x Camera Antennas
- I** 1 x Manual

Tools Required:

Electric drill

5mm masonry drill bit

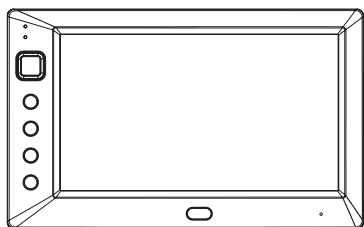
15mm masonry drill bit

No.2 Philips screwdriver

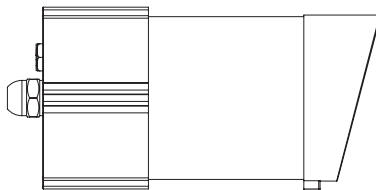
Hammer

Bradawl

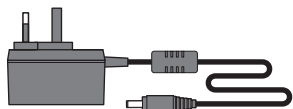
A Digital Wireless Receiver



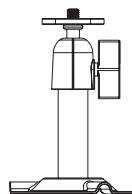
B Digital Wireless Camera



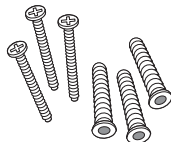
C 5V/1A Power Adapter for Camera and Receiver



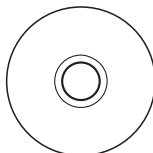
D Camera Stand



E Fixings Pack



F Video Playback PC Software (CD-ROM)



G AV Cable



I Manual

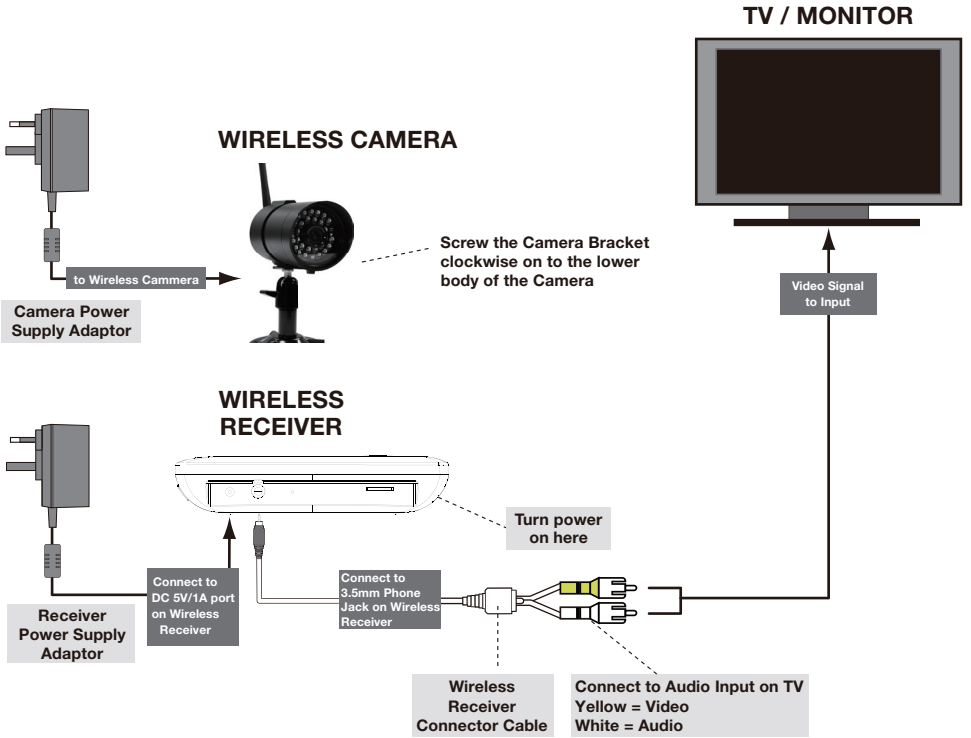


H Camera Antenna



3. INSTALLATION

3.1 Contents and Connections

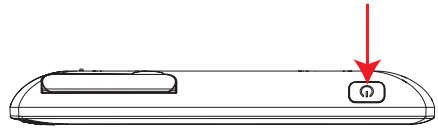
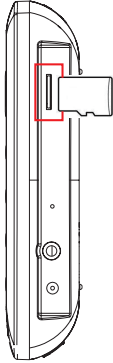


3.2 Powering up the system

Insert the memory card into the DVR if not already fitted

Press and Hold power key for one second to power hold the power. Press and hold the power key for two seconds to power off the system.

After system power on, adjust the camera viewing position again if necessary.



Trouble Shooting

PROBLEM	SOLUTION
<i>No camera picture</i>	<i>The power supply adaptor for the monitor camera(s) is not plugged in. Camera out of range. Locate camera closer to the receiver.</i>
<i>Poor picture quality</i>	<i>Clean the camera lens.</i>
<i>A white image appears at night</i>	<i>The camera's infra-red LEDs shine invisible light that reflects of surfaces such as glass causing white light. Place the camera on the other side of windows to try to improve the night vision or place in a well lit area.</i>

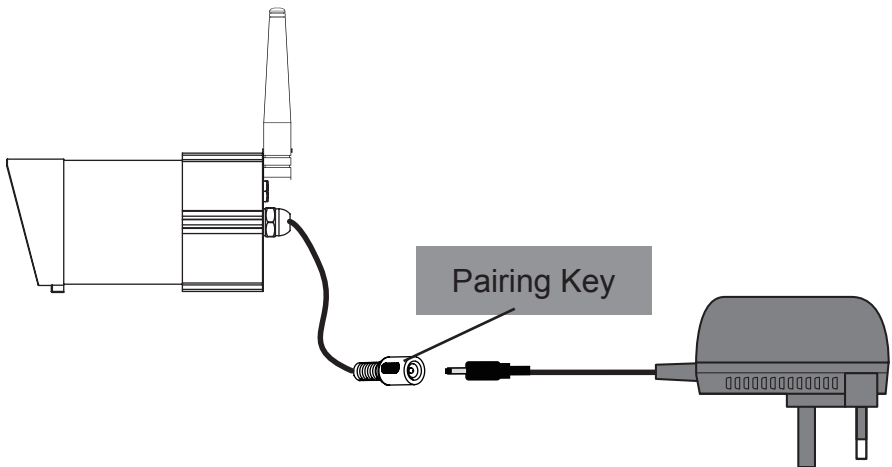
3.3 Setting the Camera Channel (Optional)

All wireless cameras will be supplied preset to channel 1.

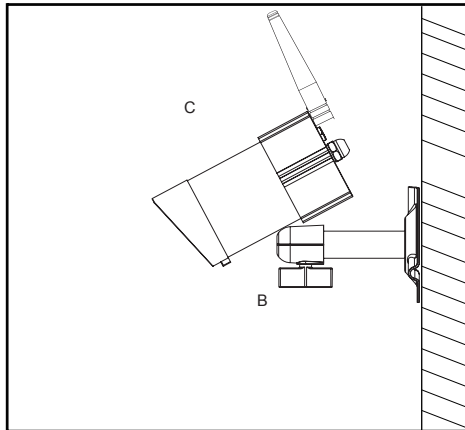
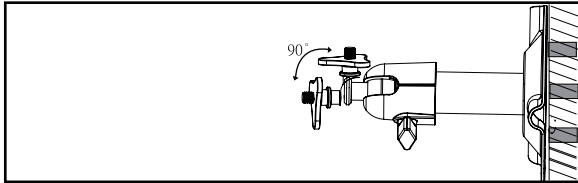
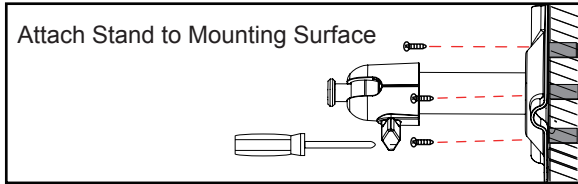
The wireless monitor supports up to 4 wireless cameras. Follow the step below to set or change the monitor channel of the camera. If you are adding another camera to link with the supplied monitor in this kit, then ensure its channel is set to a different channel to the existing camera(s).

3.4 Pairing the Camera to Receiver (Optional)

Follow the steps in 6.1 Camera Setup (p.16) SETUP section to set or change the channel of the camera. If you are adding another camera to link with the supplied receiver in this kit, then ensure its channel is set to a different channel to the existing camera(s).

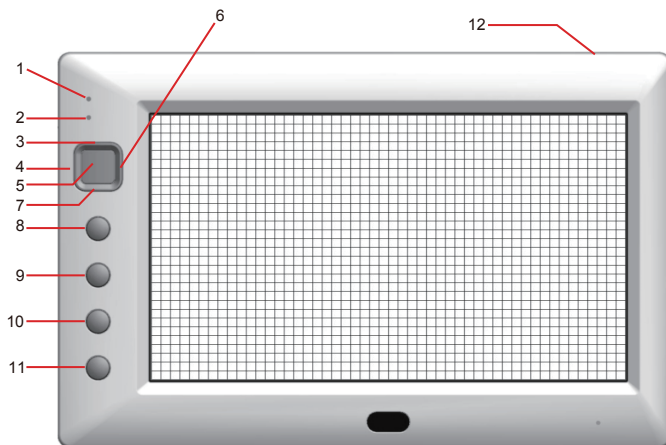


3.5 Camera Installation



- A. Secure camera stand on the wall
- B. Loosen the thumb screw
- C. Adjust the camera to the correct viewing position then secure the joint with T-bolt.

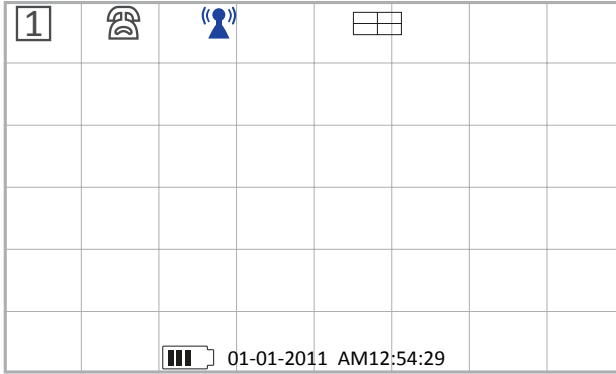
4. MONITOR PANEL INTRODUCTION



	Display	Menu	Playback	REC Mode	Other
1					Link indicator
2					Power indicator
3	Switch Channel	Cursor UP	Fast Forward		
4	VOL Down	Cursor Left	VOL Down Switch Display CH		
5	Menu	OK / ENTER	PLAY / PAUSE		
6	VOL Up	Cursor Right	VOL Up Switch Display CH		
7	Switch Channel	Cursor Down	Fast Backward		
8	ESC	EXIT	Previous		
9	REC/STOP		DEL	STOP	
10	ZOOM		Next		
11	ALARM				
12					Power Button

5. SYSTEM INTRODUCTION

5.1 Icon Functions



(Display Icon)

1. Signal Indicator
2. Channel Indicator
3. Recording Indicator
4. Audio Channel Indicator
5. Display mode
 - QUAD Display
 - Scan Display
 - Single Display
6. Audio Volume (Seven volume levels)
 - = Full Volume
 - = 1/2 Volume
 - = Mute
7. Receiver Power Indicator

Power indicator will indicate 100% when adaptor in use

IIII = 100% Strength
8. System Time **MM DD YYYY AMhh:mm:ss**
9. ZOOM Indicator
 - PTZ X 1 Indicator
 - PTZ X 2 Indicator

5.2 System Menu

[Main Menu]

Press MENU to enter main menu.

After entering [MAIN MENU] system will highlight EVENT LIST by default. System will idle in [MAIN MENU] for 2 minutes before exiting [MAIN MENU].

Use ▲▼◀▶ to select, Press MENU to confirm selection and to enter sub-menu.



CAMERA SETUP



Press MENU to CAMERA SETUP Sub Menu

RECORDER SETUP



Press MENU to RECORDER SETUP Sub Menu

EVENT LIST



EVENT LIST				
DATE				PAGE 01/01
2011 03-04	2011 03-05	2011 03-06	2011 03-07	2011 03-08
2011 03-09	2011 03-10	2011 03-11	2011 03-12	2011 03-13
2011 03-14	2011 03-15	2011 03-16	2011 03-17	2011 03-18
2011 03-19	2011 03-20	2011 03-21	2011 03-22	2011 03-23

Press MENU to enter EVENT LIST

SYSTEM SETUP



Press MENU to enter SYSTEM SETUP

ALARM BUZZER



Press MENU to turn ALARM BUZZER ON / OFF for when motion is detected

PAN TILT ZOOM



Press MENU to enter single camera PAN TILT ZOOM mode

SCAN ACTIVATED CAMERAS



Press MENU to scan activated cameras in full screen mode.

MEMORY CARD OVERWRITE



Press MENU to set memory card overwrite ON or OFF.

6. System Operation

6.1 Camera Setup



Select CAMERA SETUP, press MENU key once to enter sub-menu.



Use ▼▲ to select the camera to set up (1-4).

Use ◀▶ to select [PAIRING] [BRIGHTNESS] [CAMERA ON/OFF]

Camera Pairing



With PAIRING section highlighted, press MENU key once to begin camera pairing (pair LED on camera will blink once and following with LED blinking continuously indicating data transmission in process).

System will confirm pairing process is successful with "PAIRED" displaying on screen.

System will indicate pairing process failed with "PAIRING FAIL" displaying on screen.

Press ESC to return to main menu.

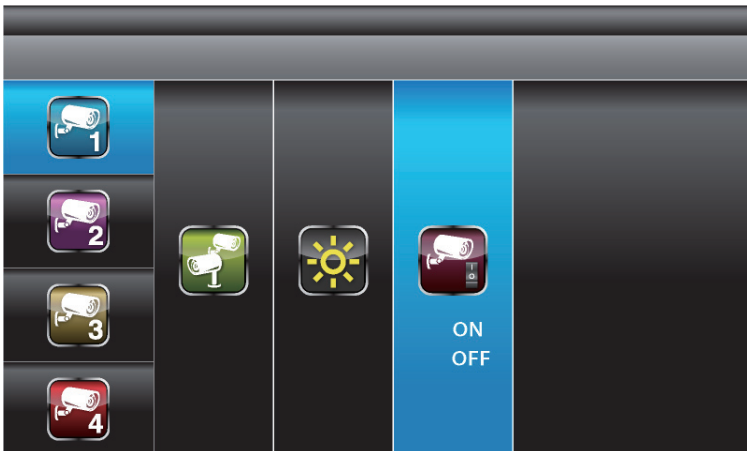
Camera Brightness Adjustment



With BRIGHTNESS section highlighted, use ▼▲ to adjust camera brightness.

Press ESC to return to main menu.

Camera Activation



With ACTIVATION section highlighted, use ▼▲ to enable or disable camera.

Press ESC to return to main menu.

NOTE:

Ensure the cameras are paired to the receiver for SCAN or QUAD to function properly (camera "ON" can only be selected when camera has been paired to system.).

6.2 Recorder Setup

Record Schedule



Use ▲▼◀▶ to select and press MENU to enter schedule setup. There are three different recording options available to choose from. First highlight the time period and press MENU key to switch between different recording mode.

M: MOTION (REC only when motion detected)

S: SCHEDULE (continuous REC)

X: MANUAL (manual REC)

The system will record video from all 4 channels simultaneously with MOTION, SCHEDULE and MANUAL record modes. One of the four channels will have audio available.

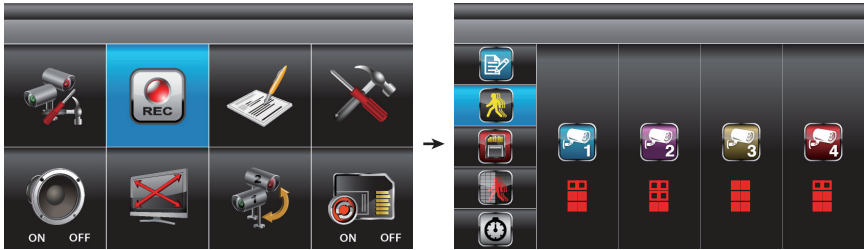
When the system performing MOTION record, audio will automatically switch to the channel triggering by motion.

Recording cannot be stopped until 30 seconds after recording started. This mandatory system operation is designed to prolong the overall life of memory card. To stop recording, press REC/DEL once. To remove memory card, please power off system first.

If under SCHEDULE record mode, the system will automatically resume recording 60 seconds after recording stopped manually. If under MOTION record mode, system will resume motion detection function 60 seconds after recording stopped manually.

Recording must be stopped before user can enter system main menu and system will resume QUAD mode after idling for two minutes.

Motion Detection Sensitivity



Select RECORDER SETUP, press MENU to enter.

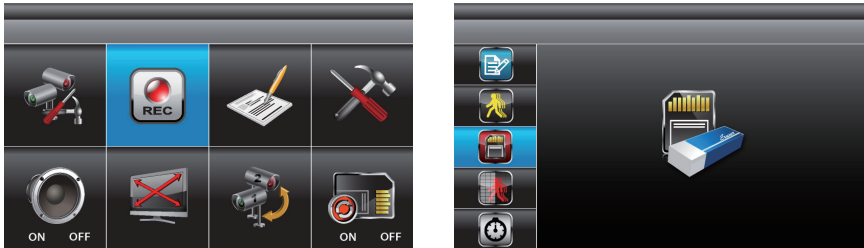
Use ▲▼ to select MOTION DETECTION SENSITIVITY section

Use ◀▶ to highlight camera for setup

Use ▲▼ to adjust sensitivity level: OFF / LV1 / LV2 / LV3 (LV3 is most sensitive)

Press ESC to save and exit

Format Memory Card



Select RECORDER SETUP, press MENU to enter

Use ▲▼ to select FORMAT STORAGE, press MENU to enter

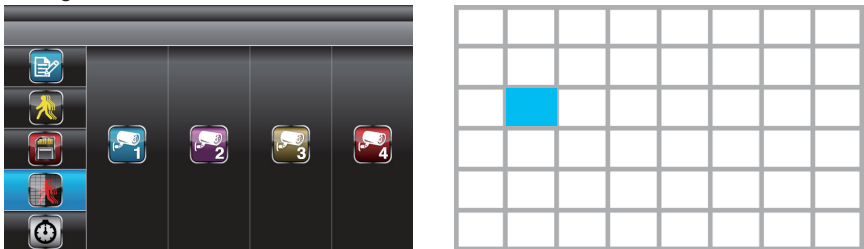
Press MENU again to confirm and begin formatting memory card

Press ESC to exit

NOTE:

If a new memory card is used then it must be formatted first here before use.

Setup Masking Area



Select RECORDER SETUP, press MENU to enter.

Use ▲▼ to select MASKING AREA section

Use ◀▶ to highlight camera for setup, press MENU to enter

Use ◀▶ ▲▼ to highlight the grid for no motion detection in this area. Use MENU key to mask/unmask grid(s). Movements taking place inside masked area will be ignored. Use ◀▶▲▼ to select another grid for setup or press ESC to save and exit

Record Time



Select RECORDER SETUP, press MENU to enter.

Use ▲▼ to select RECORD TIME section

Use ◀▶ to highlight recording period: 2 Min / 5 Min / 10 MIN, press MENU to confirm

Press ESC to save and exit

6.3 Event List

Playback

EVENT LIST					EVENT LIST			
DATE					12-12-2012			
PAGE 01/01								
2011 03-04	2011 03-05	2011 03-06	2011 03-07	2011 03-08	AM12:00 AM01:00	AM02:00 AM03:00	AM04:00 AM05:00	AM06:00 AM07:00
2011 03-09	2011 03-10	2011 03-11	2011 03-12	2011 03-13	AM08:00 AM09:00	AM10:00 AM11:00	PM12:00 PM01:00	PM02:00 PM03:00
2011 03-14	2011 03-15	2011 03-16	2011 03-17	2011 03-18	PM04:00 PM05:00	PM06:00 PM07:00	PM08:00 PM09:00	PM10:00 PM11:00
2011 03-19	2011 03-20	2011 03-21	2011 03-22	2011 03-23	AM12:00 AM01:00	AM02:00 AM03:00	AM04:00 AM05:00	AM06:00 AM07:00
					AM08:00 AM09:00	AM10:00 AM11:00	PM12:00 PM01:00	PM02:00 PM03:00
					PM04:00 PM05:00	PM06:00 PM07:00	PM08:00 PM09:00	PM10:00 PM11:00

Use ◀▶ to highlight desired DATE index for playback

Press MENU to confirm selection and enter selected folder.

Press ◀▶ to select Hour (each block represent one hour time), Press MENU to enter

Use ◀▶ to highlight desired HOUR for playback.

Press MENU to confirm selection and enter selected folder.

Schedule				
System Setup				
Yes No				
	AM12:00	AM01:00	AM02:00	AM03:00
	AM04:00	AM05:00	AM06:00	AM07:00
	AM08:00	AM09:00	AM10:00	AM11:00
	PM12:00	PM01:00	PM02:00	PM03:00
	PM04:00	PM05:00	PM06:00	PM07:00
	PM08:00	PM09:00	PM10:00	PM11:00

NOTE:

Each RECORDED FILE folder is indicated with file start / end time and type of file recorded.

(1) Starting / Time:



Start Time = PM10:33
End Time = PM10:43

(2) The type of recorded file (Schedule / Motion / Manual) is indicated by:



= Channel 1 is SCHEDULE recorded file



= Channel 1 is MOTION recorded file



=Channel 1, 2, 3 and 4 are MANUAL (C = Continuous) recorded files

To playback recorded file, use ◀▶ to highlight RECORDED FILE.

Press MENU to confirm selection and playback selected file.

■□ □1 □2 □3 □4 = All channel playback

For single camera display, press MENU once after playback started to PAUSE.

Use ◀▶ to select from channel to channel.

Channel indicator (bottom left screen) will indicate the channel number selected.

□□ ■1 □3 □4 = Channel 1 playback in full screen

□□ □1 ■2 □3 □4 = Channel 2 playback in full screen

□□ □1 □2 ■3 □4 = Channel 3 playback in full screen

□□ □1 □2 □3 ■4 = Channel 4 playback in full screen

NOTE:

(1) For other control functions available during playback mode, please refer to section 4 - MONITOR PANEL INTRODUCTION (p.12).

(2) The CD provided is for playing back the recorded file(s) from the memory card on a PC.

6.4 System Setup

Date and Time



Select SYSTEM SETUP, press MENU to enter.

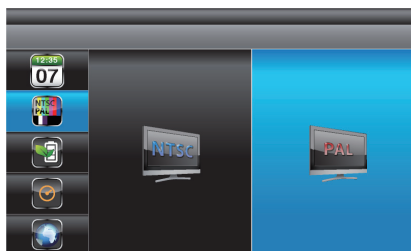
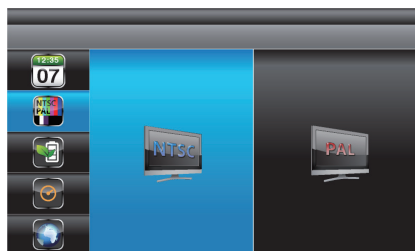
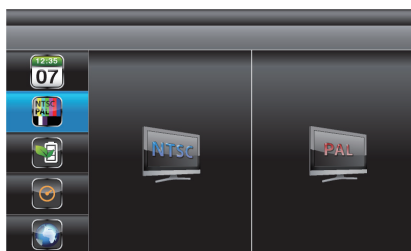
Use ▲▼ to highlight DATE AND TIME, press MENU to enter.

Use ◀▶ to highlight adjust: YEAR / MONTH / DATE / HOUR / MINUTE, use ▲▼ to adjust each section and press MENU to confirm adjustment.

Press ESC to save and exit

TV Out System (NTSC/PAL)

Use the supplied A/V output cable to display the system on a TV/monitor if required.



Select SYSTEM SETUP, press MENU to enter.

Use ▲▼ to select TV OUTPUT.

Use ◀▶ to highlight NTSC or PAL, press MENU to confirm selection.

Press ESC to save and exit.

NOTE:

Changing the TV system may affect display image scale.

Power Saving



(5 Minutes)



(10 Minutes)

(Always ON)

Select SYSTEM SETUP, press MENU to enter.

Use ▲▼ to select POWER SAVING

Use ◀▶ to select SCREEN OFF AFTER 5 MINUTES IDLE / SCREEN OFF AFTER 10 MINUTES IDLE / SCREEN ALWAYS ON, press MENU to confirm setting.

Press ESC to save and exit.

Multi Channels Idle Display

This is used to set the display mode for each camera channel when the display is left idle.





(Display QUAD mode)



(5 sec Intervals)



(10 sec Intervals)



(15 sec Intervals)

Select SYSTEM SETUP, press MENU to enter.

Use ▲▼ to select MULTI CHANNELS IDLE DISPLAY.

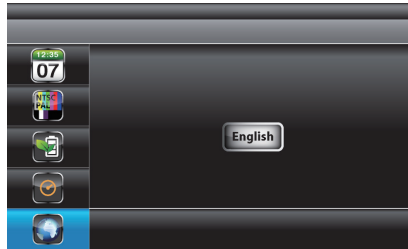
Use ◀▶ to select: DISPLAY QUAD DURING IDLE / AT 5 SEC INTERVALS / AT 10 SEC INTERVALS / AT 15 SEC INTERVALS, press MENU to confirm selection.

Press ESC to save and exit.

NOTE:

- (1) Camera ON/OFF setting in CAMERA SETUP section will affect which camera(s) can be displayed during IDLE DISPLAY.
- (2) Audio (single channel at anytime) will be available during QUAD mode (by default on channel 1 or the next available channel with camera paired to system), single FULL screen mode (auto switch to channel viewing at the time), or channel triggered by motion.
- (3) Audio channel will stay connected until channel switched.
- (4) If set to 5/10/15 sec. interval then select SCAN ACTIVATED CAMERAS (p.27) to achieve this display mode.

Default



Select SYSTEM SETUP, press MENU to enter.

Use ▲▼ to select DEFAULT.

Use ◀▶ to select the system language for SYSTEM RESTORE, press MENU to confirm selection and system will restore to factory default.

NOTE:

While SYSTEM RESTORE icon highlighted, system firmware version will be displayed (example: VER:11.06.11-21:13:09)

6.5 Alarm Buzzer



Select ALARM BUZZER, press MENU to turn buzzer ON or OFF. When motion is detected by a camera, then a buzzer sound will be triggered by the monitor.

6.6 Pan Tilt Zoom



Select PAN TILT ZOOM, press MENU once to enter ZOOM mode, press MENU again to zoom in (2X).

When zooming in, use ▲▼◀▶ to select various view areas.

Press MENU to zoom out.

In zoom out (1X), use ▲▼ to change available channel

Press ESC to exit ZOOM.



Select SCAN ACTIVATED CAMERAS, press MENU once to begin camera scan mode.

NOTE:

(1) Camera ON/OFF setting in CAMERA SETUP section will affect which camera(s) can be displayed during IDLE DISPLAY. See p.25 for the display interval setup.

(2) The system will automatically activate QUAD display if recording function is activated.

6.7 Memory Card Overwrite

When the memory is full, by enabling this function will allow you to overwrite the earliest files with the recent ones.



Select MEMORY CARD OVERWRITE, press MENU once to activate overwrite function and press MENU again to de-activate.

NOTE:

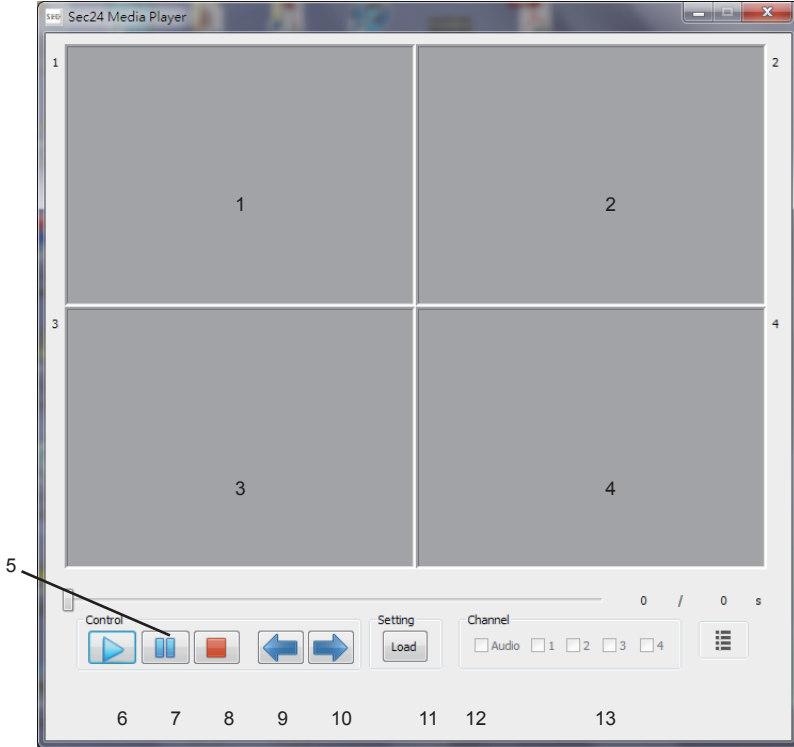
(1) One of the following examples will appear on display screen a. 1.89GB - space available on memory card. b. ERROR - either memory card is missing, locked or damaged.

(2) When memory card is full, the system will display "MEMORY FULL PLEASE FORMAT" on the preview screen if overwrite is not enabled.

7.PLAYBACK SOFTWARE

Sec24 Media Player is specifically designed to playback recorded files from the Digital Wireless Colour Camera Recordable CCTV Kit you have purchased on PC. Others cannot playback recorded files without Sec24 Media Player; this is for you privacy protection.

7.1 Sec24 Media Player Introduction



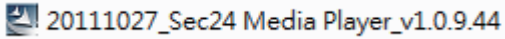
1. Channel 1 Playback Screen
2. Channel 2 Playback Screen
3. Channel 3 Playback Screen
4. Channel 4 Playback Screen
5. Playback Progress Bar
6. Play
7. Pause
8. Stop
9. Fast Rewind
10. Fast Forward
11. Load Recorded File(s)
12. Replay Last File
13. Channel Enable / Disable Select

7.2 Installation

Insert CD came with the package into the CD-ROM on PC.

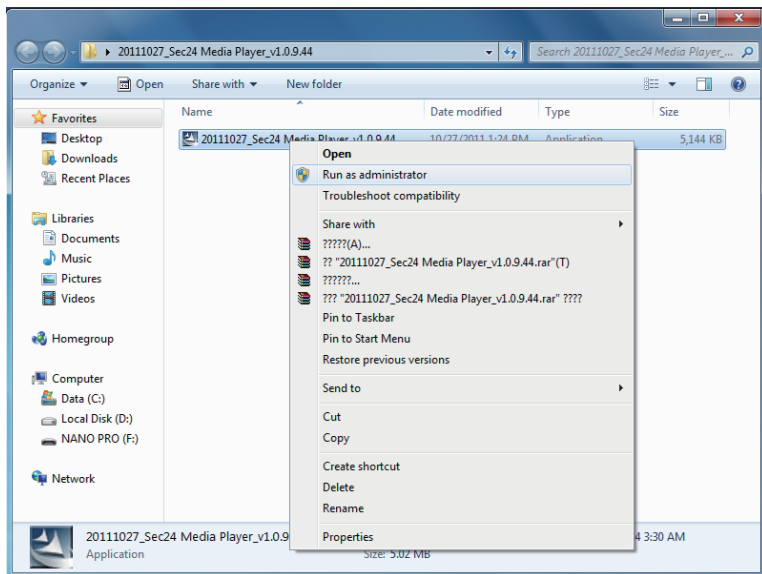
Click on MY COMPUTER, double click on the drive where the CD-ROM assigned by PC (for example: E:).

In E drive you will find the following icon. Please follow installation procedure A to X to complete installation.

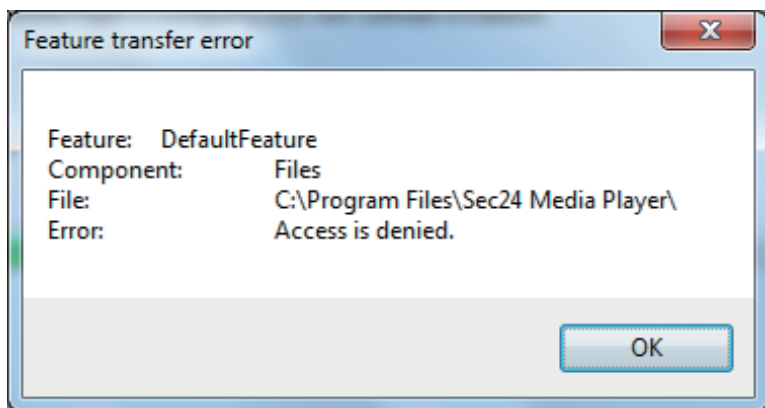


NOTE:

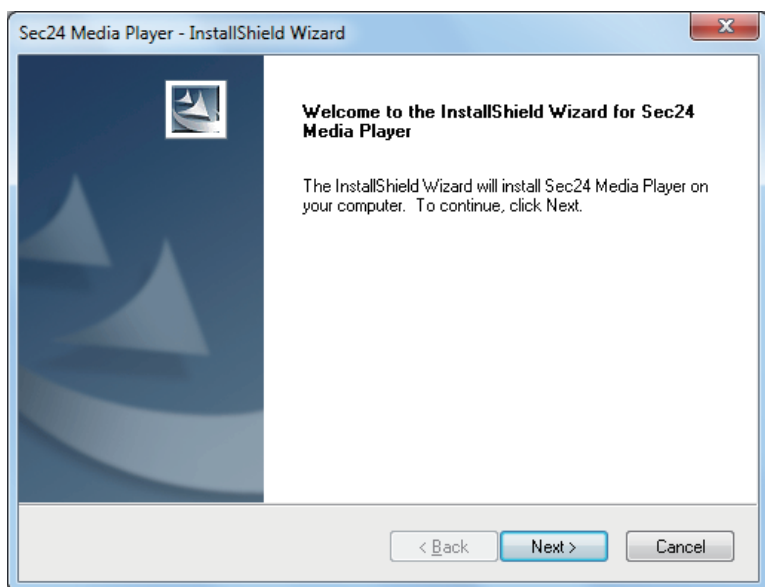
- (1) If Window 7 is running on your PC, please right click on icon “20111027_Sec24 Media Player_v1.0.9.44” and select “Run as administrator” option first to begin installation.



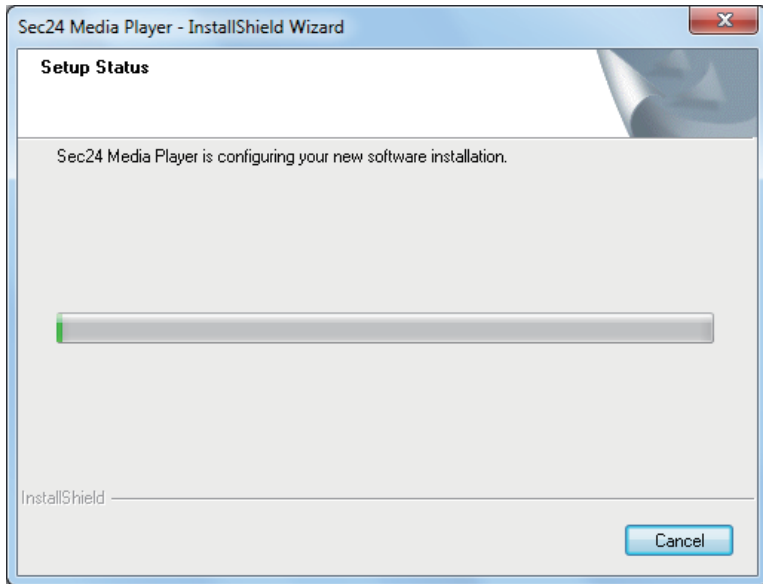
(2) Following error message will appear if user did not select “Run as administrator” option first before starting the installation.



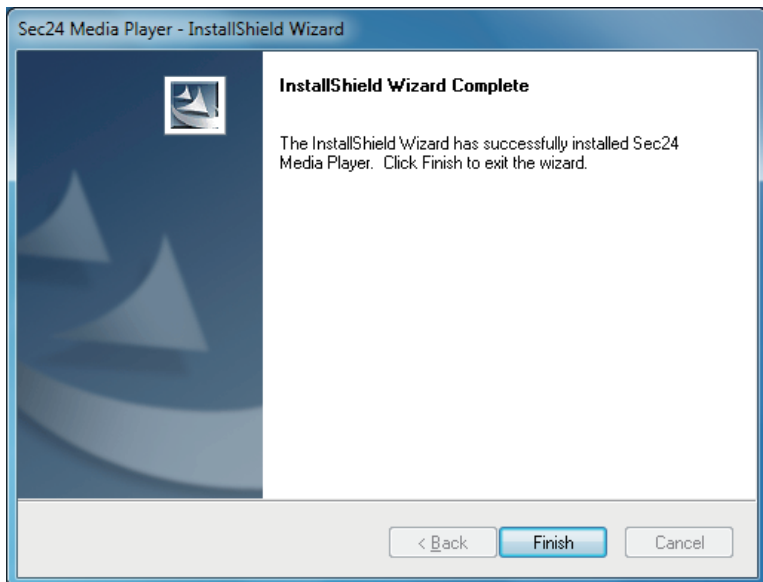
A. Double click the icon to start installation process.



B. Click “Next” and following window will appear on screen.

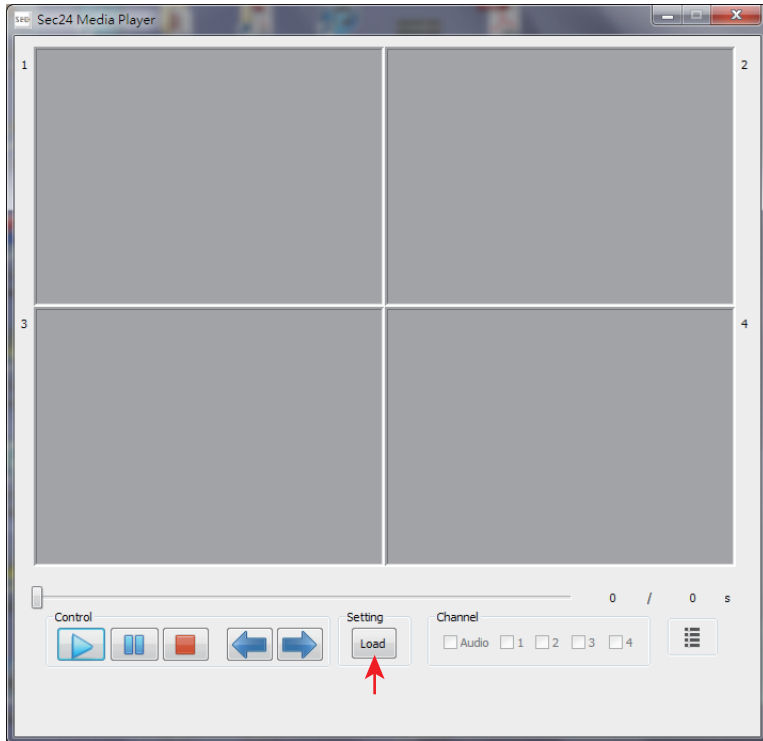


Following window will appear on screen after installation completes. Click “Finish” to complete the installation.

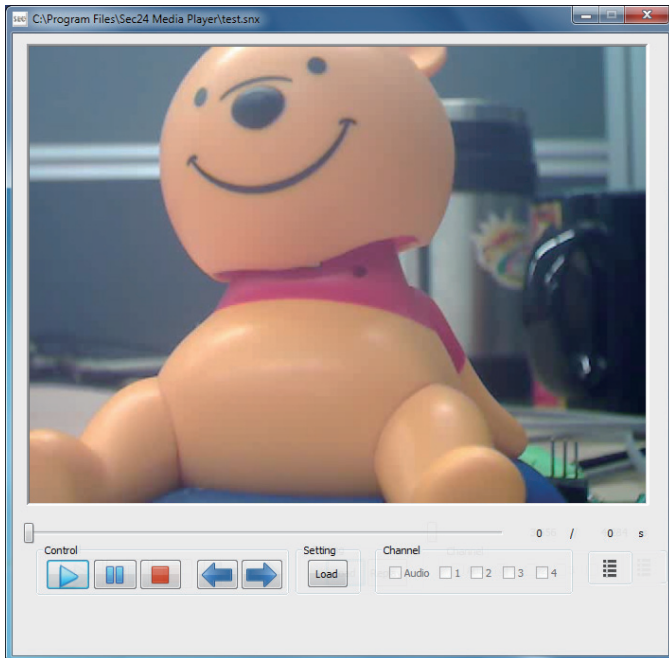
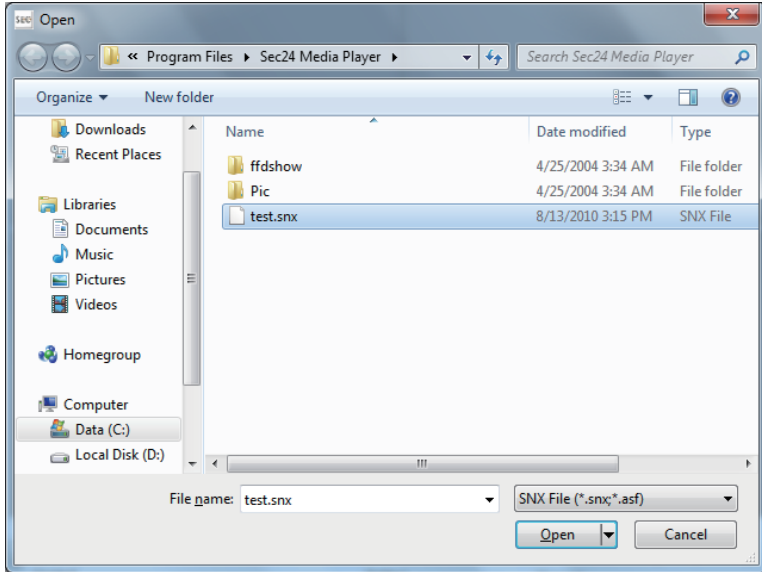


7.3 Playback Recorded File(s)

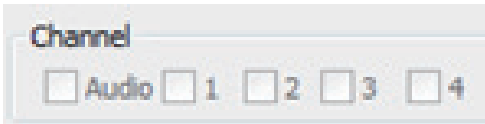
Double click Sec24 Media Player icon on desktop to start software



Click on “Load” to import and playback previous recorded files (SNX files) already stored on PC.



7.4 Channel Disable / Enable Select

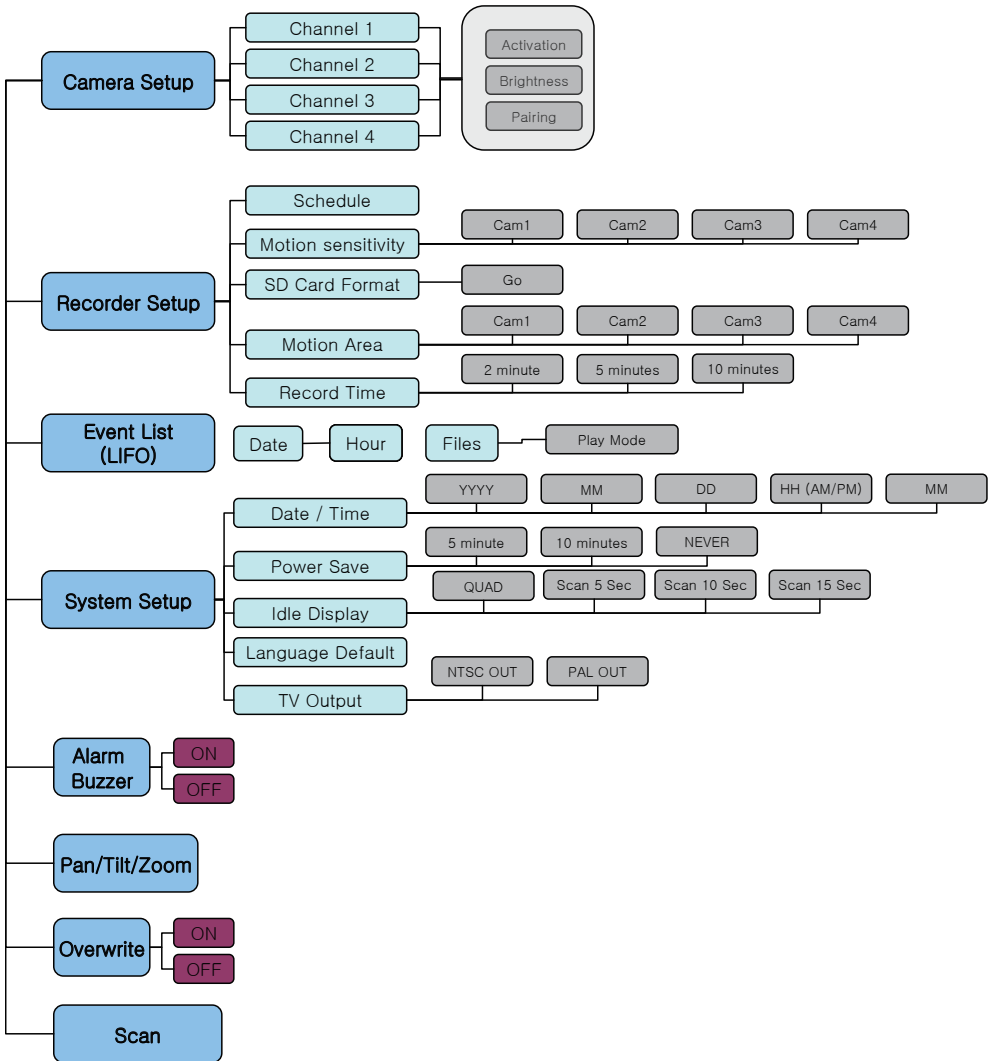


During playback, all four channels will playback at once. For privacy concern, user is able to manually disable audio channel and/or video channel(s).

Select Audio to turn off sound

- Select 1 to turn off video image from channel 1
- Select 2 to turn off video image from channel 2
- Select 3 to turn off video image from channel 3
- Select 4 to turn off video image from channel 4

8. System Configuration



9.Product Specification

	Camera	Receiver
Maximum Channels	4	
Communication Range	150 metres in open space	
Monitor Resolution	800X480	
Camera Resolution	640X480	
Operating Temperature	-10°C ~ 50°C	
Operating Voltage	DC 5V / 1A	
Curren Consumption	550mA(max)	860mA(max)
Night Vision	5-8m	
Dimension	130x61x67 mm	200x122x25 mm

10.Total Recording Time for Memory Cards (32GB max.)

Micro SD Card Capacity	640 x 480(VGA)
1G	60Minutes
2G	110 Minutes
8G	400 Minutes
16G	950 Minutes
32G	1880 Minutes