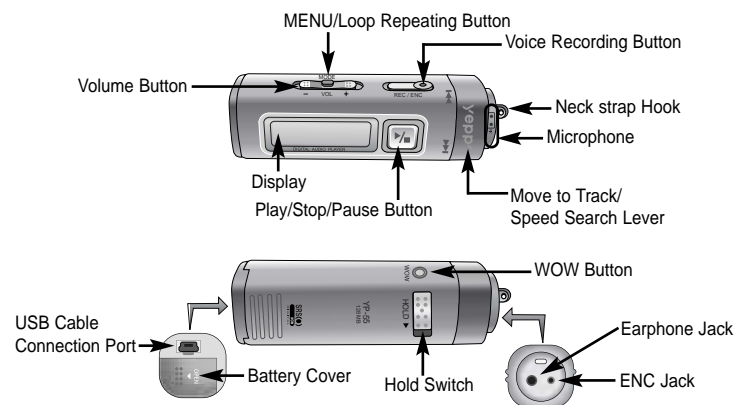


YP-55 Quick Guide

Location of Controls



Playing Music

When you press the ►/■ button, the yepp logo appears and a music/voice file is played.

Stopping Music

When you press the ►/■ button while playing, the music stops. If no buttons are pressed within 10 seconds (changes depending on settings), the yepp automatically powers off.

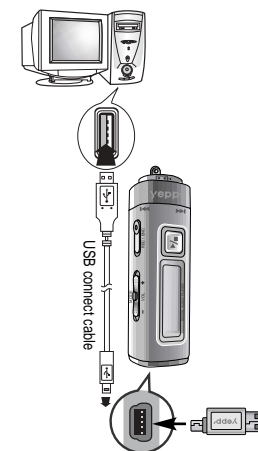
- You can also turn off the power by pressing and holding the ►/■ button.

1

Connecting the USB cable

► Before connecting yepp to PC, make sure to install USB driver.

- 1 Plug one end of the USB cable into the USB port on the back of the PC.
- 2 Connect the opposite end of the USB cable to the USB cable port on the bottom of the yepp.
 - If you disconnect the USB cable from your PC while implementing a command or initializing during USB driver installation, your PC may not function correctly.
 - The yepp will automatically turn on.
- 3 USB driver is installed with a message saying that it is searching for a new device. You may not see the display screen during installation. Go to the device manager to check that installation has been successfully completed..
- 4 Upon installation of the USB driver "SAMSUNG YP-55" will appear in the [System Properties] → [Device Manager].



2

Downloading/Uploading files

- 1 Turn on the yepp and connect it to your PC.
- 2 Open Windows Explorer on PC.
- 3 Select the file to save and drag-and-drop it into the removable disk icon. The saved files will be played in file name order. If you want to change the order, please change the file name. (In numerical, alphabetical order)



Notice :

- The "WRITING/READING" message will appear during file download or upload. Disconnecting the USB cable while "WRITING/READING" is displayed may cause malfunction of the unit.
- Files within a user created folder can only be played in Music Mode.
- The order of music files displayed in Windows Explorer may differ from the play order on your device.

3

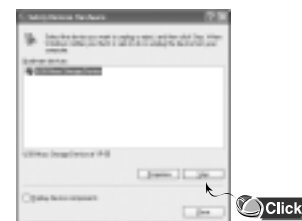
Disconnecting the USB cable

After completing file transmission, you must disconnect the cable in the following way:

- 1 Double-click on the green arrow in the taskbar on the bottom right of the window. Disconnect the USB cable.



- 2 Select the USB device, and then press the **[Stop]** button.



AH68-01504A (Rev 0.0)

4