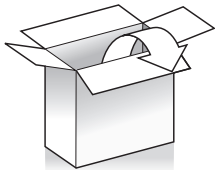


YARVIK

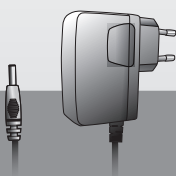


TAB211

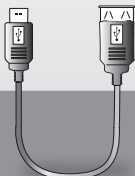
7" tablet



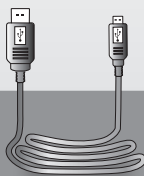
1x



1x



1x



1x

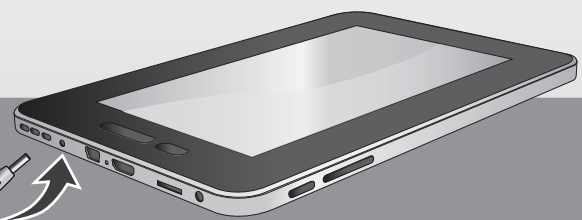


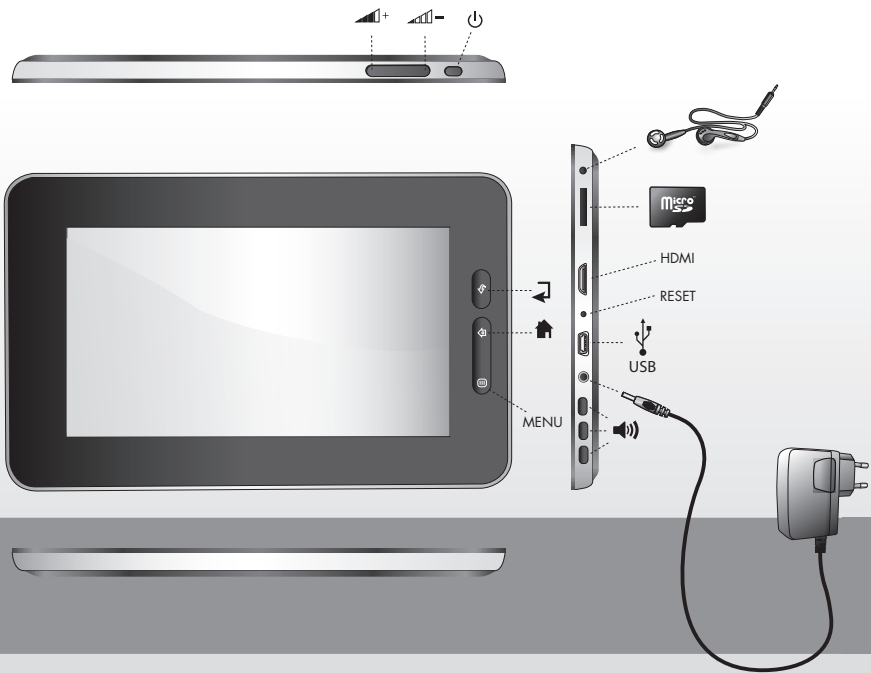
1x



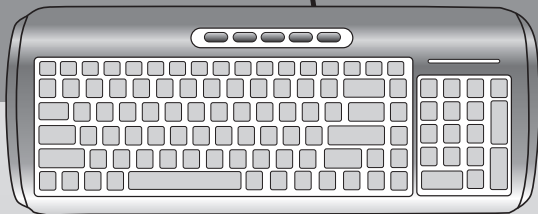
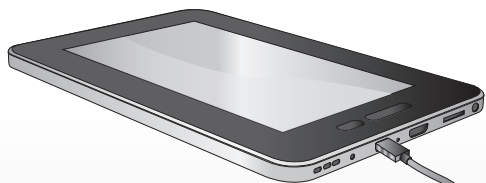
1x

Please visit our website for CE declaration: www.yarik.com



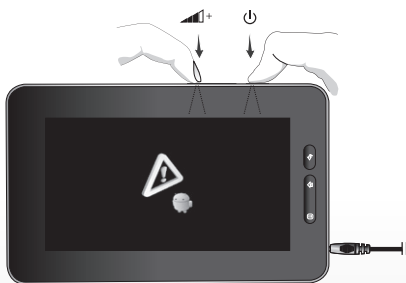
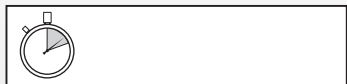
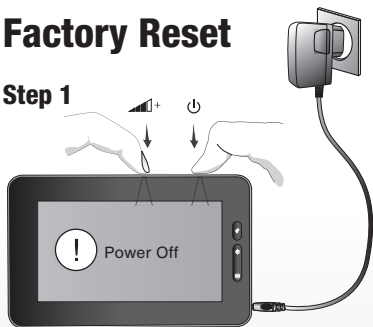


Connecting USB



Factory Reset

Step 1



Hold for **20** seconds

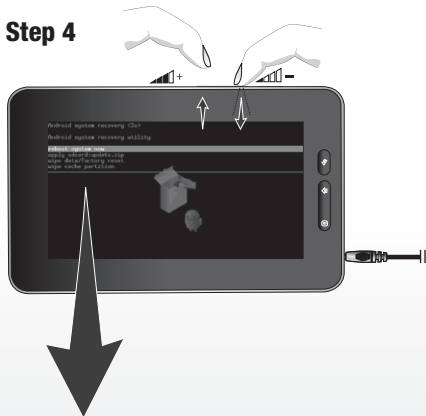
Step 2



Step 3

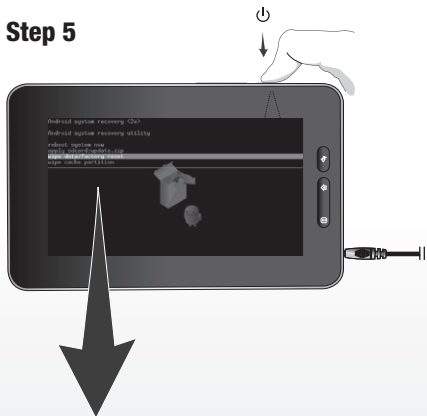


Step 4



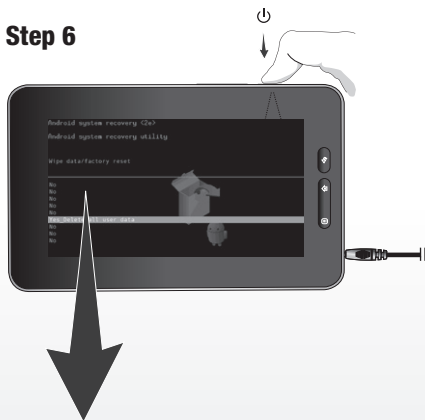
```
Android system recovery <2e>  
Android system recovery utility  
reboot system now  
apply sdcard:update.zip  
wipe data/factory reset  
wipe cache partition
```

Step 5



```
Android system recovery <2e>  
Android system recovery utility  
reboot system now  
apply sdcard:update.zip  
wipe data/factory reset  
wipe cache partition
```

Step 6

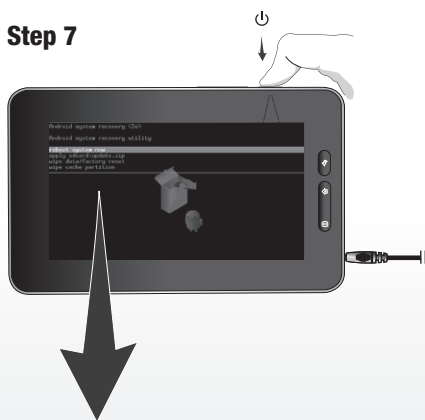


```
Android system recovery <2e>
Android system recovery utility

Wipe data/factory reset

No
No
No
No
Yes Delete all user data
No
No
No
```

Step 7



```
Android system recovery <2e>
Android system recovery utility

reboot system now
apply sdcard:update.zip
wipe data/factory reset
wipe cache partition
```


Step 8



 facebook.com/yarvik twitter.com/yarvikce

YARVIK.COM